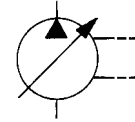




# PVV-200 or 250

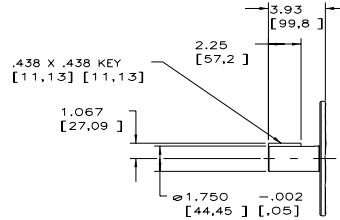
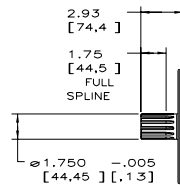
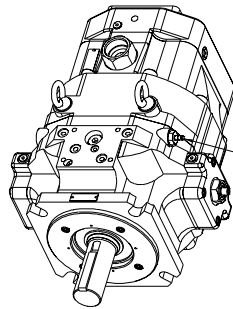


### Installation Drawing

### Basic Pump without Control - Rear Ported, ISO Mounting

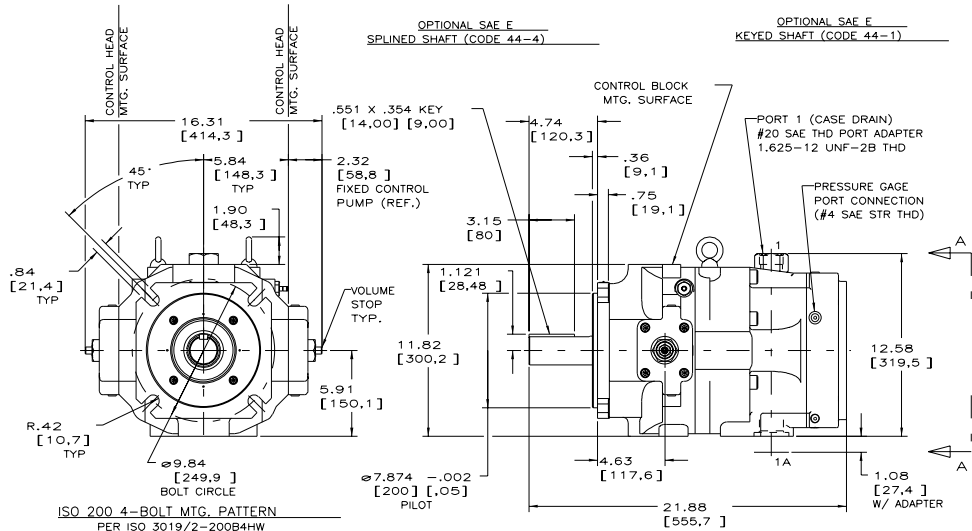
PW-200-B1U  
PVV-250-B1U

- NOTES:
1. PUMPS DESIGNED FOR ONE-WAY SERVICE ARE DIMENSIONED AS SHOWN.
  2. THESE UNITS ARE DESIGNED TO RUN CASE FULL OF FLUID AT ALL TIMES. FILL CASE BEFORE STARTING AND CONNECT DRAIN LINES ACCORDINGLY.
  3. HORIZONTAL MOUNTING STANDARD. FOR VERTICALLY MOUNTED UNITS, SEE OILGEAR BULLETIN 90014.
  4. DIMENSIONS GIVEN IN INCHES/[MM].
  5. NET WEIGHT - 355 LBS. [161 KG.]

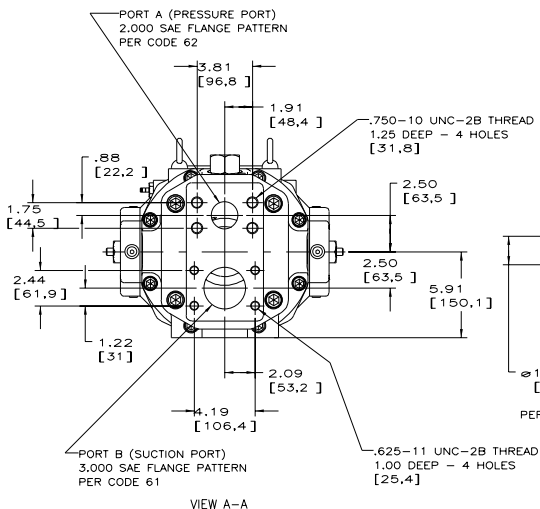


OPTIONAL SAE E  
SPLINED SHAFT (CODE 44-4)

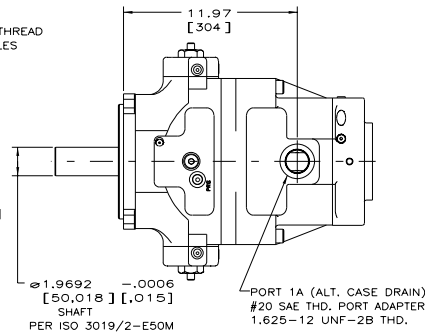
OPTIONAL SAE E  
KEYED SHAFT (CODE 44-1)



ISO 200 4-BOLT MTG. PATTERN  
PER ISO 3019/2-200B4HW



VIEW A-A

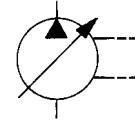


PORT 1A (ALT. CASE DRAIN)  
#20 SAE THD. PORT ADAPTER  
1.625-12 UNF-2B THD.

519103-001, sh. 2



# PVV-200 or 250

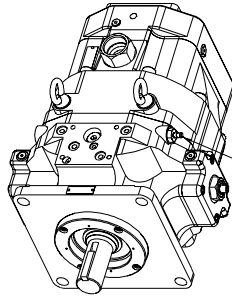


### Installation Drawing

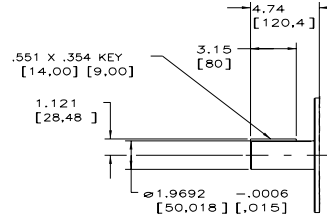
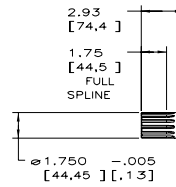
### Basic Pump without Control - Rear Ported, SAE Mounting

PVV-200-B1S  
PVV-250-B1S

- NOTES:
1. PUMPS DESIGNED FOR ONE-WAY SERVICE ARE DIMENSIONED AS SHOWN.
  2. THESE UNITS ARE DESIGNED TO RUN CASE FULL OF FLUID AT ALL TIMES. FILL CASE BEFORE STARTING AND CONNECT DRAIN LINES ACCORDINGLY.
  3. HORIZONTAL MOUNTING STANDARD. FOR VERTICALLY MOUNTED UNITS, SEE OILGEAR BULLETIN 90014.
  4. DIMENSIONS GIVEN IN INCHES/[MM].
  5. NET WEIGHT - 355 LBS. [161 KG.]

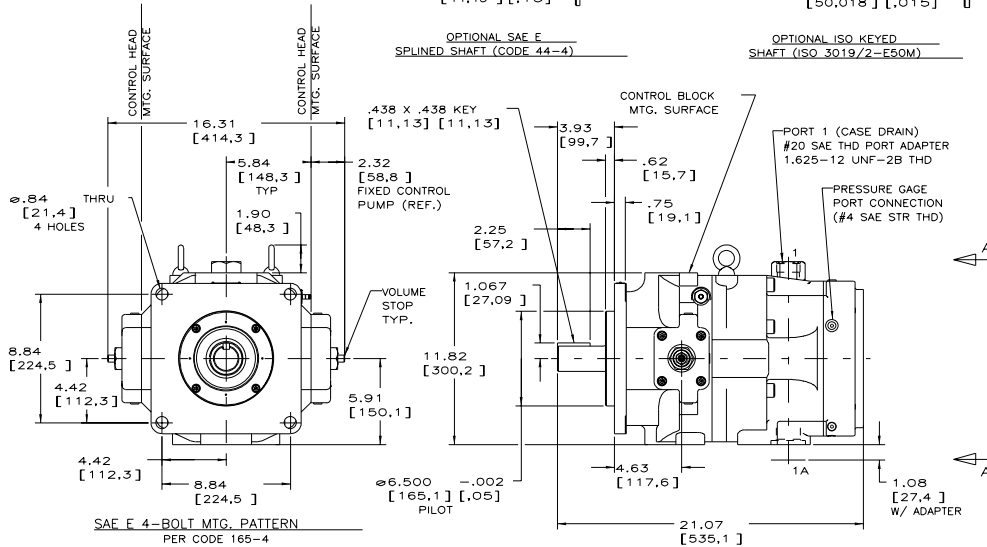


STROKE INDICATOR

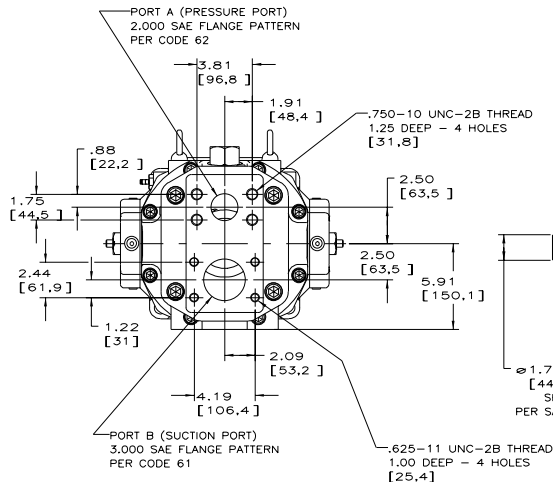


OPTIONAL SAE F  
SPINED SHAFT (CODE 44-4)

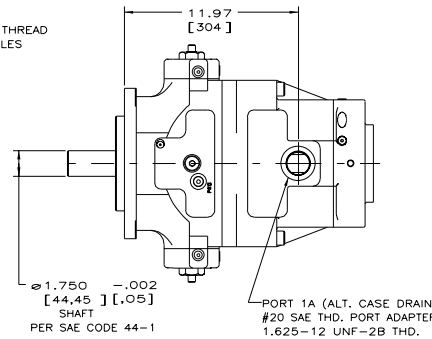
OPTIONAL ISO KEYED  
SHAFT (ISO 3019/2-E50M)



SAE F 4-BOLT MTC. PATTERN  
PER CODE 165-4



VIEW A-A



519103-002, sh. 2