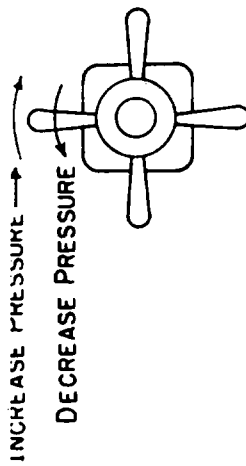


OIL CIRCUIT REMOTE TYPE "DXP" PUMP WITH PRESSURE CONTROL VALVE

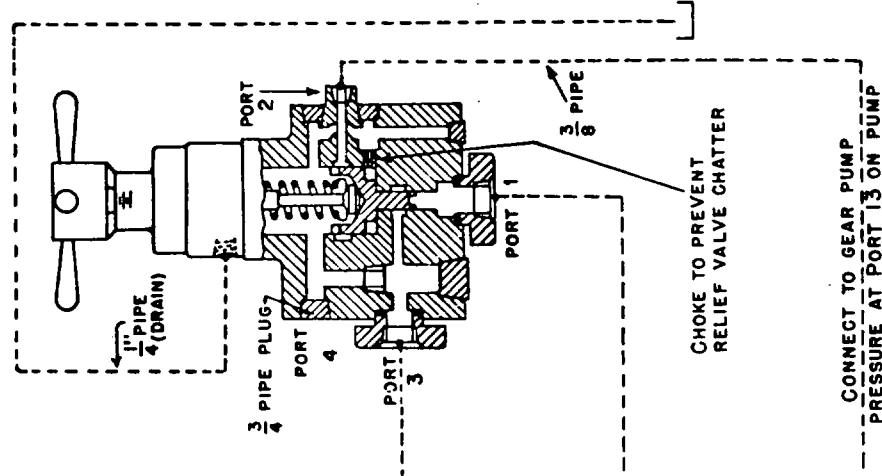
PUMP INST. DWG. DS-47806
REMOTE PRESS. CONTROL VALVE INST. DWG. DS-47502
REMOTE PRESS. CONTROL VALVE PARTS DWG. DS-947502
"DXP" PUMP OIL CIRCUIT DS-947821

ENERGIZE SOLENOID "A" FOR PRESSURE AT PORT "A".
ENERGIZE SOLENOID "B" FOR PRESSURE AT PORT "B".

TYPE "DXP" PUMP WITH REMOTE PRESSURE CONTROL VALVE



ADJUST THIS REMOTE PRESSURE CONTROL VALVE FOR VARYING PRESSURE



ORIFICE (ONLY IF NECESSARY TO RAISE OPERATING PRESSURE FOR PRESSURE SWITCH)

PRESSURE SWITCH CONNECTION

FULL STROKE STOP

VOLUME ADJUSTING SCREW

PORT 34

NEUTRAL STOP PLUNGER

CONTROL RELIEF VALVE

PORT 24

1" PIPE CONNECTION TO GEAR PUMP PRESSURE AT PORT 11 ON PUMP

NEUTRAL CYL. CONN.

3" HIGH PRESSURE LINE FROM PUMP

FULL STROKE CYL. CONN.

PORT "A" VOLUME CONTROL

CHOKE TO PREVENT RELIEF VALVE CHATTER

CONNECT TO GEAR PUMP PRESSURE AT PORT 13 ON PUMP

CIRCUIT SHOWS PUMP VIEWED FROM FLANGE END

1/2" PIPE PLUG