

SERVICE INSTRUCTIONS

OILGEAR TYPE "HN" HANDWHEEL CONTROLS FOR "PVWH" AND "PVW" PUMPS

PURPOSE OF INSTRUCTIONS

These instructions have been prepared to simplify and minimize your work of operating Oilgear type "HN" controlled units. This material will inform you as to basic construction, principle of operation and service parts listing. Some controls may be modified for specific applications from those described and other changes may be made without notice.



Figure 1. Typical "HN" Control for Oilgear "PVWH" and "PVW" Pumps. (N89-002-11).

REFERENCE MATERIAL

Fluid Recommendations	Bulletin 90000
Filtration Recommendations	Bulletin 90007
"PVWH" and "PVW" Open Loop Pumps .	Bulletin 947015

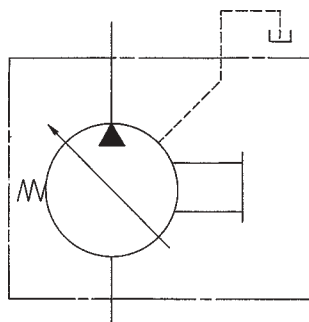


Figure 2. ASA Diagram for "HN" Control with Typical
"PVWH" Pump. (509815)

THE OILGEAR COMPANY

2300 So. 51st. Street
Milwaukee, WI 53219

PRINCIPLE OF OPERATION

A SYSTEM relief valve must be used to protect pump and system.

The handwheel control on open-loop one-way variable displacement pumps provides a simple manual adjustment of delivery. Rotating the handwheel one-way increases delivery - the other way decreases delivery.

PARTS LIST

Parts used in this assembly are per Oilgear Specifications. Use Oilgear parts to ensure compatibility with assembly requirements. When ordering replacement parts, be sure to include pump type designation and serial number stamped on nameplate, bulletin and item number. To assure seal and packing compatibility, specify type of hydraulic fluid used.

ITEM NO.	DESCRIPTION
303	Screw, H.H.C.
355	Seal, O'ring
356	Seal, O'ring
358	Screw, H.H.C.
359	Plug, SAE
360	Plug, SAE
361	Plug, SAE
362	Piston, Control
365	Gasket, Control Cover
368	Housing, "HN" Control
369	Gasket, Control
370	Spring, Control Piston
371	Plug, Control
372	Cover, Control Housing
373	Pin, Control Piston
374	Screw, S.H.C.
375	Seal, O'ring
378**	Stop, Control Piston
381A	Spacer
385	Seal, O'ring
388A	Screw, Set
389	Knob, Control
390	Nut, Jam
391	Stem, Min. Volume Stop
392	Adapter, Volume Stem
393	Stem, Maximum Volume Stop
394	Seal, O'ring

** Used only for "PVWH" 11 thru 60 and "PVW" 15 thru 60.

NOTES:



THE OILGEAR COMPANY
2300 So. 51st. Street
Milwaukee, WI 53219