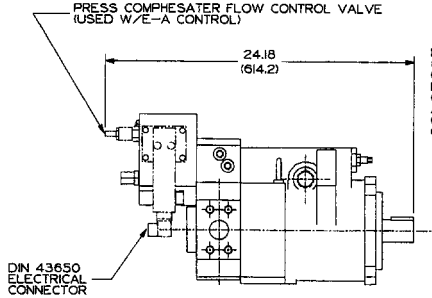


### PVK 140, 270/370

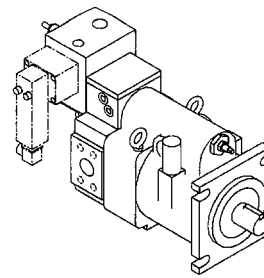
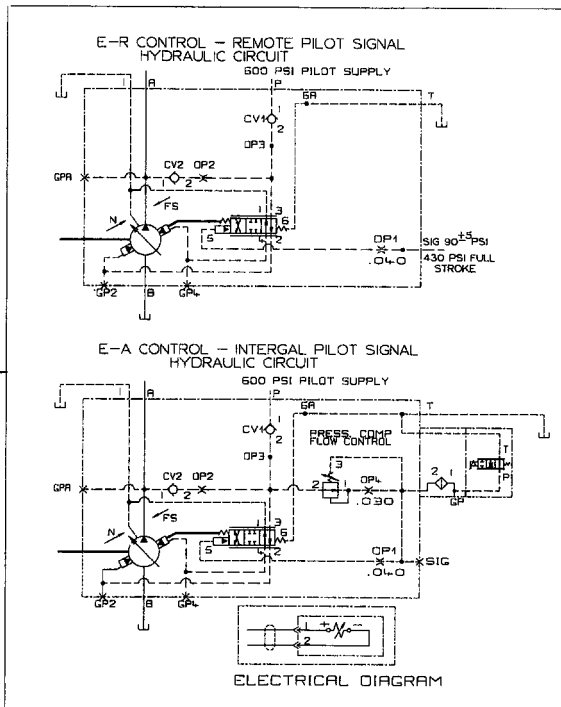
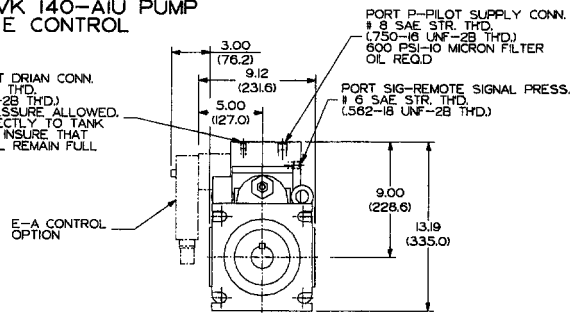


#### Installation Drawing Proportional Pilot Signal Displacement Control

##### OILGEAR PVK 140-AIU PUMP WITH E CONTROL

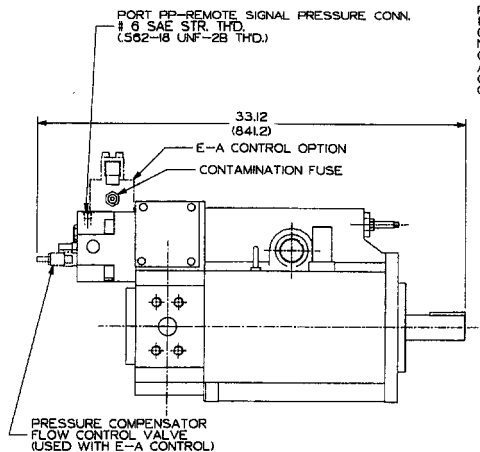


PORT T-PILOT DRAIN CONN.  
# 6 SAE STR. THD.  
(.562-18 UNF-28 THD.)  
NO BACK PRESSURE ALLOWED.  
CONNECT DIRECTLY TO TANK  
AND PIPE TO INSURE THAT  
CONTROL WILL REMAIN FULL  
OF FLUID.

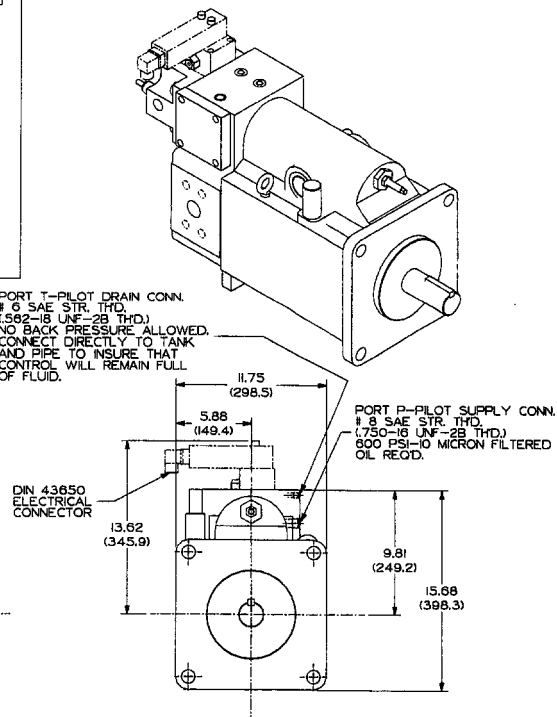


FOR BASIC PUMP DIMENSIONS SEE PLANOGRAPH DS-47926A SH 1 OF 2 DRAWING 515618-001

##### OILGEAR PVK 270-BIU/370-BIU PUMP WITH E CONTROL



PORT T-PILOT DRAIN CONN.  
# 6 SAE STR. THD.  
(.562-18 UNF-28 THD.)  
NO BACK PRESSURE ALLOWED.  
CONNECT DIRECTLY TO TANK  
AND PIPE TO INSURE THAT  
CONTROL WILL REMAIN FULL  
OF FLUID.



FOR BASIC PUMP DIMENSIONS SEE PLANOGRAPH DS-47926A SH 2 OF 2 DRAWING 515618-002